

THE REGULATION ZONE

**Water Safety
Portable Pools & Aquatic Toys
October 2022**



THE LOWDOWN - LET'S GET STRAIGHT TO IT!

Being around water is part of everyday life in Australia, whether it be at the beach, backyard pools and spas, rivers and creeks, public swimming pools or dams on farms.

However, did you know that drowning is one of the major causes of unintentional death for Australian children under 5 years of age?

Toddlers can drown in as little as a few centimetres of water – this means that objects including buckets, inflatable/toddler wading pools, backyard ponds, eskies with melted ice and even pets drinking bowls can all pose a potential drowning hazard.



AQUATIC TOYS - THE REGULATIONS



- The Consumer Goods (Aquatic Toys) Safety Standard 2020 sets out the mandatory requirements for aquatic toys. These requirements are intended to reduce the risk of serious injury or death to children from drowning.
- An aquatic toy must comply with the relevant sections of one of the following standards:
 - Australian/New Zealand Standard AS/NZS ISO 8124.1:2019 Safety of toys Part 1: Safety aspects related to mechanical and physical properties
 - International Standard ISO 8124-1:2018 Safety of toys - Part 1: Safety aspects related to mechanical and physical properties.
- From 13 June 2022, there is a new regulation which suppliers & retailers must comply with.

AQUATIC TOYS - Mandatory Standard

The mandatory standard applies to aquatic toys that are designed:

- to bear the mass of a child under the age of 14
- for use in play in shallow water by a child
- whether or not it is inflatable and whether or not it is designed to be worn or otherwise attached to the body.

Aquatic toys can include but are not limited to:

- inflatable novelty shapes
- inflatable toy boats for shallow water
- unattached rings — complete or partial.

What warnings need to be applied to aquatic toys?

Aquatic toys should carry a statement that this is not a life saving device, followed by a warning that the toy should only be used in shallow water and under supervision.

As an example, it may state -

THIS AQUATIC TOY IS NOT A LIFE SAVING DEVICE. THE TOY SHOULD ONLY BE USED IN SHALLOW WATER AND UNDER SUPERVISION.

PORTABLE SWIMMING POOLS & SPAS

THE REGULATIONS



The [Consumer Goods \(Portable Swimming Pools\) Safety Standard 2013](#) sets out the mandatory requirements for portable swimming pools.

The mandatory standard applies to portable swimming pools that are both:

- intended for personal, domestic or household use and one of the following:
 - an inflatable swimming pool, of any depth
 - a soft-sided swimming pool, of any depth
 - a rigid-sided swimming pool that is not deeper than 300 mm.
- The mandatory standard applies to spas, hot tubs or whirlpool tubs that meet the definition above. For example if a spa is inflatable, it is captured by the mandatory standard.

PORTABLE SWIMMING POOLS & SPAS

THE REGULATIONS

The [Consumer Goods \(Portable Swimming Pools\) Safety Standard 2013](#) sets out the mandatory requirements for portable swimming pools.

The mandatory standard applies to portable swimming pools that are both:

- intended for personal, domestic or household use and one of the following:
 - an inflatable swimming pool, of any depth
 - a soft-sided swimming pool, of any depth
 - a rigid-sided swimming pool that is not deeper than 300 mm.
- The mandatory standard applies to spas, hot tubs or whirlpool tubs that meet the definition above. For example if a spa is inflatable, it is captured by the mandatory standard.



PORTABLE SWIMMING POOLS & SPAS WARNINGS

Portable pools & spas must be labelled with specific warnings depending on their depth.

If the depth of the portable swimming pool is less than 300 mm, the warning message must include the following statement:



'WARNING!

Children have drowned in portable swimming pools.

Ensure active adult supervision at all times.

Do not leave children unsupervised in or around the pool—keep them within arm's reach.

Empty and store safely after use.'

If the depth of the portable swimming pool is 300 mm or more, the warning message must include the following statement:



'WARNING!

Children have drowned in portable swimming pools.

Ensure active adult supervision at all times.

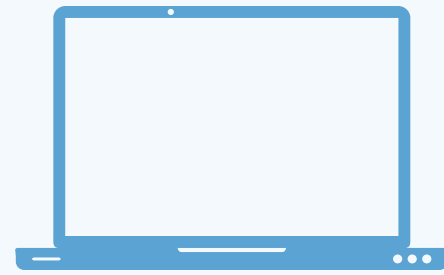
Do not leave children unsupervised in or around the pool—keep them within arm's reach.

Pool fencing laws apply to this pool. Consult your local government authority for fencing requirements.'

All portable swimming pools must display this safety sign:



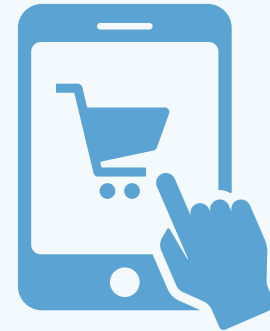
HOW CAN KIDSAFE VICTORIA HELP?



Kidsafe can help your team understand the requirements - we can virtually walk you through these.



Kidsafe can provide guidance on the testing pathways - we can help you build a suitable program for testing externally that will demonstrate compliance.



Kidsafe can conduct an independent audit of your product range - this could include a desktop sweep of your online or marketplace platform.



Kidsafe can provide an initial product and test report review to give you an unbiased view of how your product/s stack up.

Need help? Contact us today



Rob Wise

Product Integrity & Child Safety Manager

rob@kidsafevic.com.au